



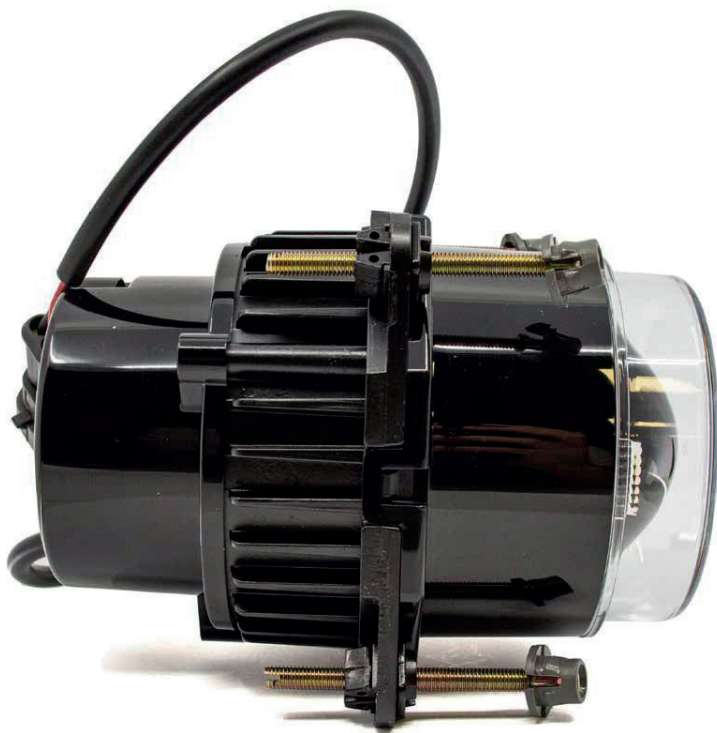
Peterson Europe
Vehicle lighting solutions
by design, by technology, by quality

90mm LED headlight range – mounting options

As part of a range upgrade, we are able to offer our 90mm headlights with a choice of mounting hardware for either light- or heavy-duty applications.

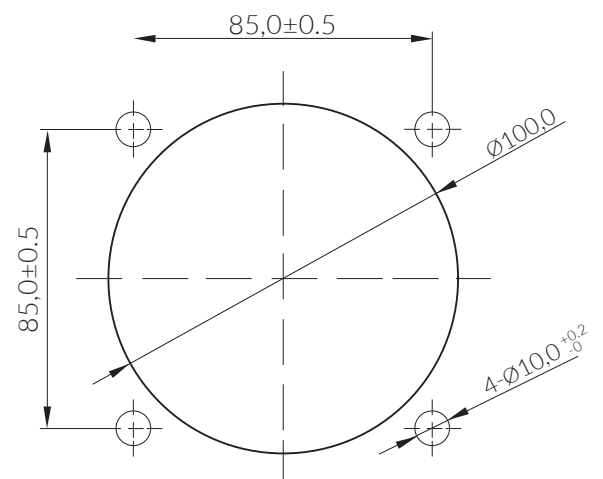
Option A - Light-duty applications (greycap) -

Typically used for bus, coach, small agri & construction vehicles



Technical Data

- Screw: cross head (PZ2),
Ø7mm, M5*65mm
- Drill hole diameter: Ø10mm
- Material thickness: 1.4~1.5mm



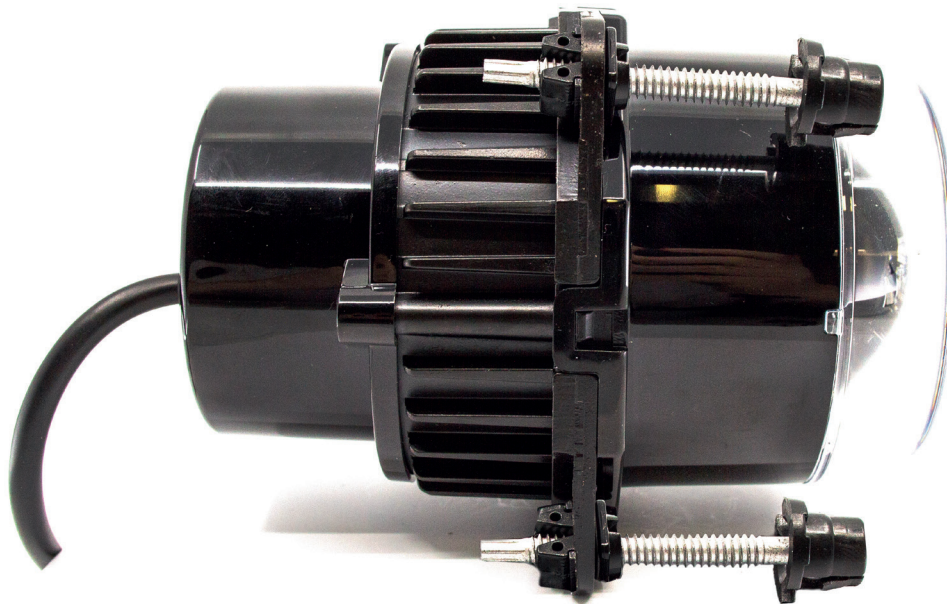


Peterson Europe

Vehicle lighting solutions

by design, by technology, by quality

Option B - Heavy-duty applications (black cap) -
Typically used for truck, large agri & construction vehicles



Technical Data

- Torx screw (T20 driver):
Ø7.5/64.5mm
- Drill hole diameter: Ø14mm
- Material thickness: 2.9~3.0mm

